

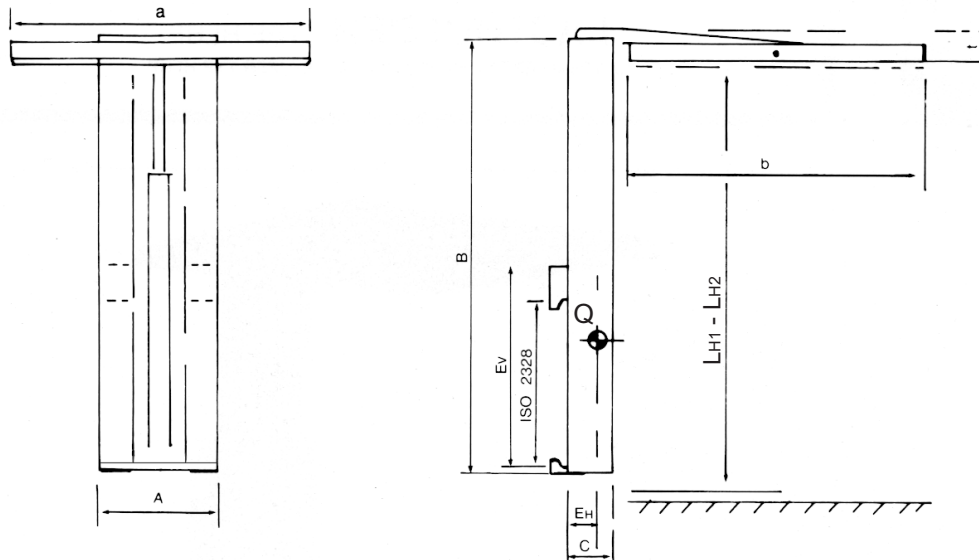


Load stabilizer, type HLHF

Advantages

- Constructed to maintain the load firmly against the forks while turning, driving on an uneven ground, accelerating, braking, etc.
- Avoids or minimizes damage on the goods
- Incorporated pressure regulator
- Compensation on the stabilizing plate





	A [mm]	B [mm]	C [mm]	E _H [mm]	E _{V1} /E _{V2} [mm]	a [mm]	b [mm]	t [mm]	Q [kg]	LH1-LH2 [mm]
HLHF 1510	300	1100	125	139	598/936	750	750	70	198	850-1450
HLHF 1511	300	1200	125	181	657/1042	750	750	70	212	950-1650
HLHF 1512	300	1300	125	174	712/1146	750	750	70	225	1050-1850
HLHF 1513	300	1400	125	168	767/1250	750	750	70	238	1150-2050
HLHF 1514	300	1500	125	163	821/1352	750	750	70	251	1250-2250
HLHF 1515	300	1600	125	158	875/1453	750	750	70	254	1350-2450

Max. working pressure 100 bar.
E_{V1} is by min. opening. E_{V2} is by max. opening.
L_H is valid for the fork class 2A.
Incl. pressure relief valve.

